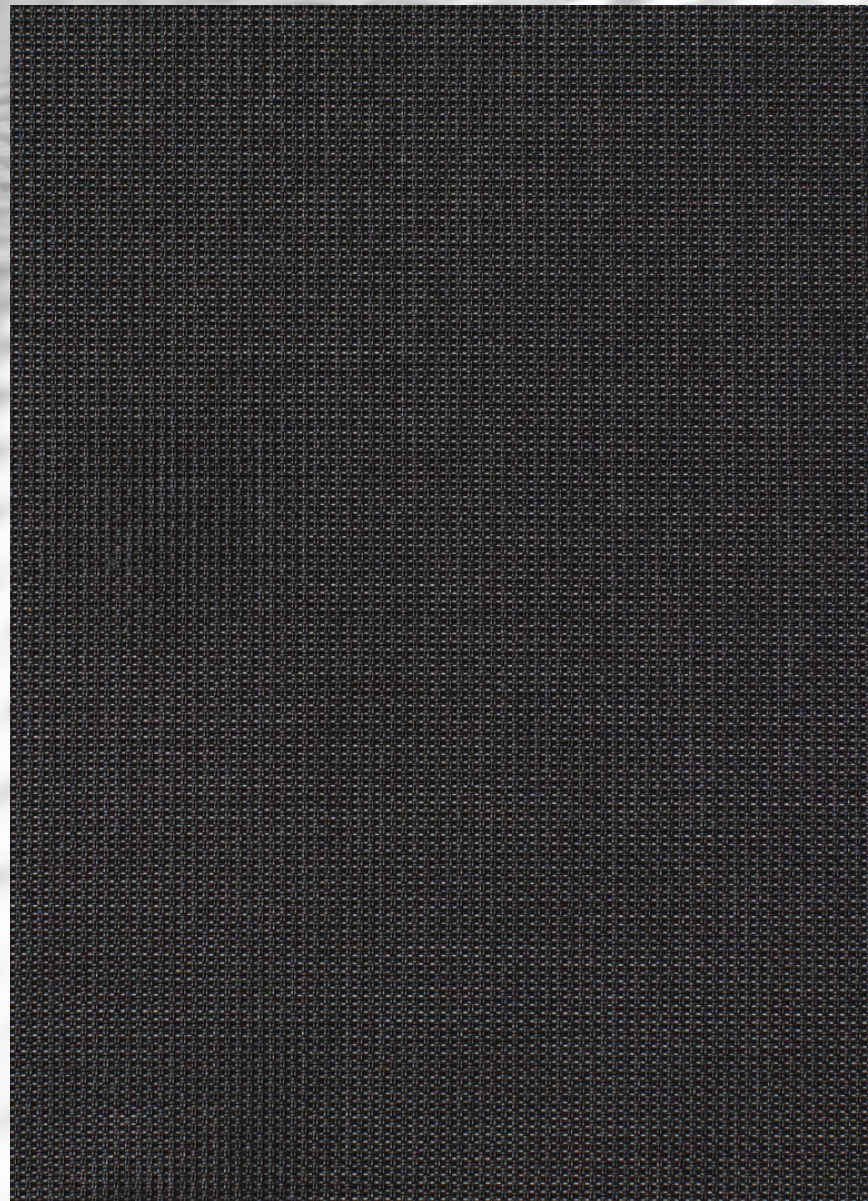




**TEXTILENE® 95**  
BRAND FABRIC



Due to the technical limitations of digital cameras and inconsistencies of display monitors, the characteristics and colors of the fabrics seen on your screen may be slightly different than the actual product.

T18A2S006  
Galaxy Black

TEXTILENE® 95 is a durable synthetic fabric made to withstand the harsh conditions of nature. Designed to reduce heat and solar glare, TEXTILENE® 95 is an excellent choice for exterior and interior use. It is flame resistant, fade resistant, and can reduce energy costs while blocking up to 95% of the sun's harmful rays.

## Specifications

**REACH Compliant** - Regulated by Registration, Evaluation, Authorization and Restriction of Chemicals. REACH places greater responsibility on industry to manage the risks that chemicals may pose to human health and the environment.

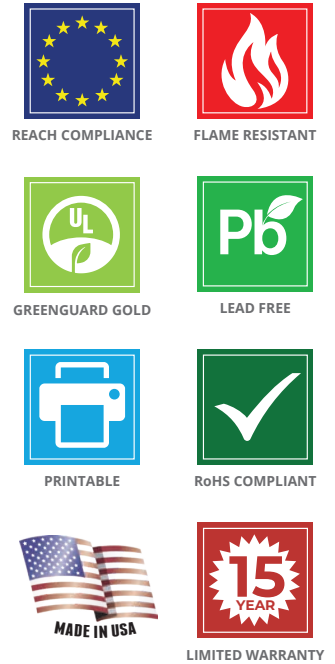
**Children's Toy Act** - Does not contain harmful phthalates listed under Section 108 of the Consumer Product Safety Improvement Act of 2008 (CPSIA).

**Fire Classification** - Passes California U.S. Title 19 (small scale), NFPA701-2015 TM#1 (small scale), NFPA 101 (Class A Rating), UBC (Class 1), BS 5867 2008 Part 2 Type B Performance, NFPA 701 TM #2 (large scale), and CAN/ULC-S 109-03 (large and small scale).

**Environmental Certification** - GREENGUARD gold certified. Acceptable for use in environments such as schools and healthcare facilities. Complies with requirements of the State of California's Department of Public Health "Standard Method for Testing and Evaluation of Volatile Organic Chemical Emissions from Indoor Sources Using Environmental Chambers, Version 1.1 (2010)" (also known as California Section 01350).

**RoHS Compliant** - Free of Lead (Pb), Cadmium (Cd), Mercury (Hg), Hexavalent chromium (Hex-Cr), Polybrominated biphenyls (PBB), and Polybrominated diphenyl ethers (PBDE).

**Bacteria and Fungal Resistance** - Passes ASTM E 2180, ASTM G21. Includes specially formulated antimicrobial.



## Technical Data

**Item Number:** T18A2S, T18A2T

**Product Description:** A woven fabric using .018" diameter vinyl coated 500 denier polyester core yarns woven in the warp and fill.

Attribute	ASTM	Warp	Fill	Typical
Construction, end/inch	D3775-12	36.0 ±0.5	26.0 ±0.5	
Weight, oz/yd <sup>2</sup>	D3776-09			17.8
Weight, g/m <sup>2</sup>	D3776-09			603.5
Tensile Strength (grab), lbf / daN	D5034-09	569.8 / 253.5	467.9 / 208.1	
Tensile Strength (strip), lbf / daN	D5035-11	314.9 / 140.1	224.1 / 99.7	
Tear Strength (trapezoidal), lbf / daN	D5733	87.6 / 39.0	57.4 / 25.5	
Elongation, %	D5035-11	32.3	24.9	
Abrasion Resistance (CS10/500 cycles/ with no added weight)	D3884-09	No Exposure of Core Yarn		
Flammability Rating		CA Title 19 & NFPA 701		
Weatherability, 1200 hours	G154	Trace Discoloration		
Mildew Resistance	G21-13	No Growth		
Thickness, inches / mm	D1777-96			0.037 / 0.9398

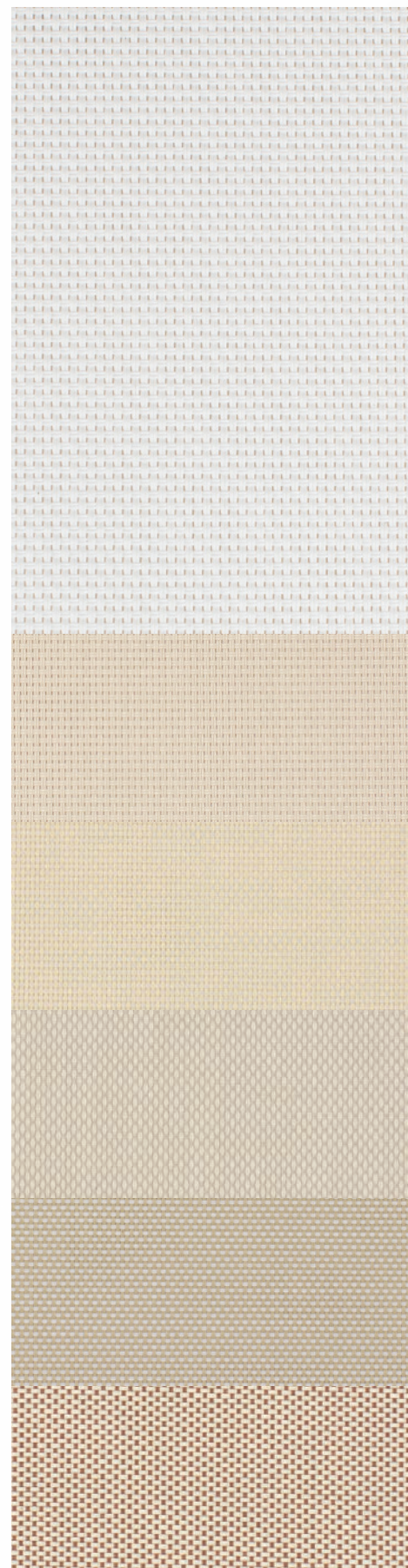
The above results are a representation of real data from single test samples. Presently no specification is incorporated.

Style	Total Solar			Visible			Insulating Glass			Insulating Glass		
	Ts	Rs	As	Ts	Rs	As	1/2" Clr.	1" Clr.	1" HA	1/2" Clr.	1" Clr.	1" HA
<b>Galaxy Black</b> Profile Angle 0	0.08	0.03	0.89	0.12	0.03	0.85	0.18	0.14	0.13	0.18	0.14	0.13
<b>Galaxy Black</b> Profile Angle 45	0.05	0.04	0.91	0.08	0.04	0.88	0.15	0.12	0.11	0.15	0.12	0.11

DISTRIBUTED OR MANUFACTURED BY:

\*Custom colors and widths available. Minimum order of 1000 yds. Upcharges may apply. \*\* Available in 33.3 yd rolls.





Pure White  
T18A2S009 x 126"

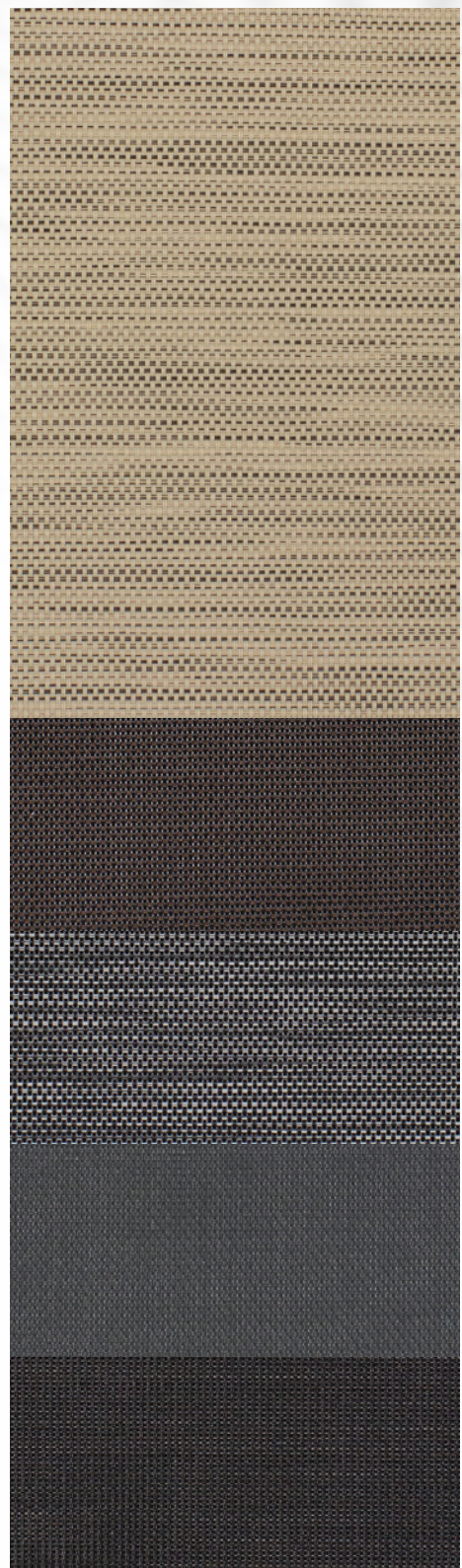
Quartz  
T18A2S007 x 126"

Putty  
T18A2T019 x 126"

Pewter  
T18A2T021 x 126"

Mushroom  
T18A2T018 x 126"

Almond Brown  
T18A2T022 x 126"



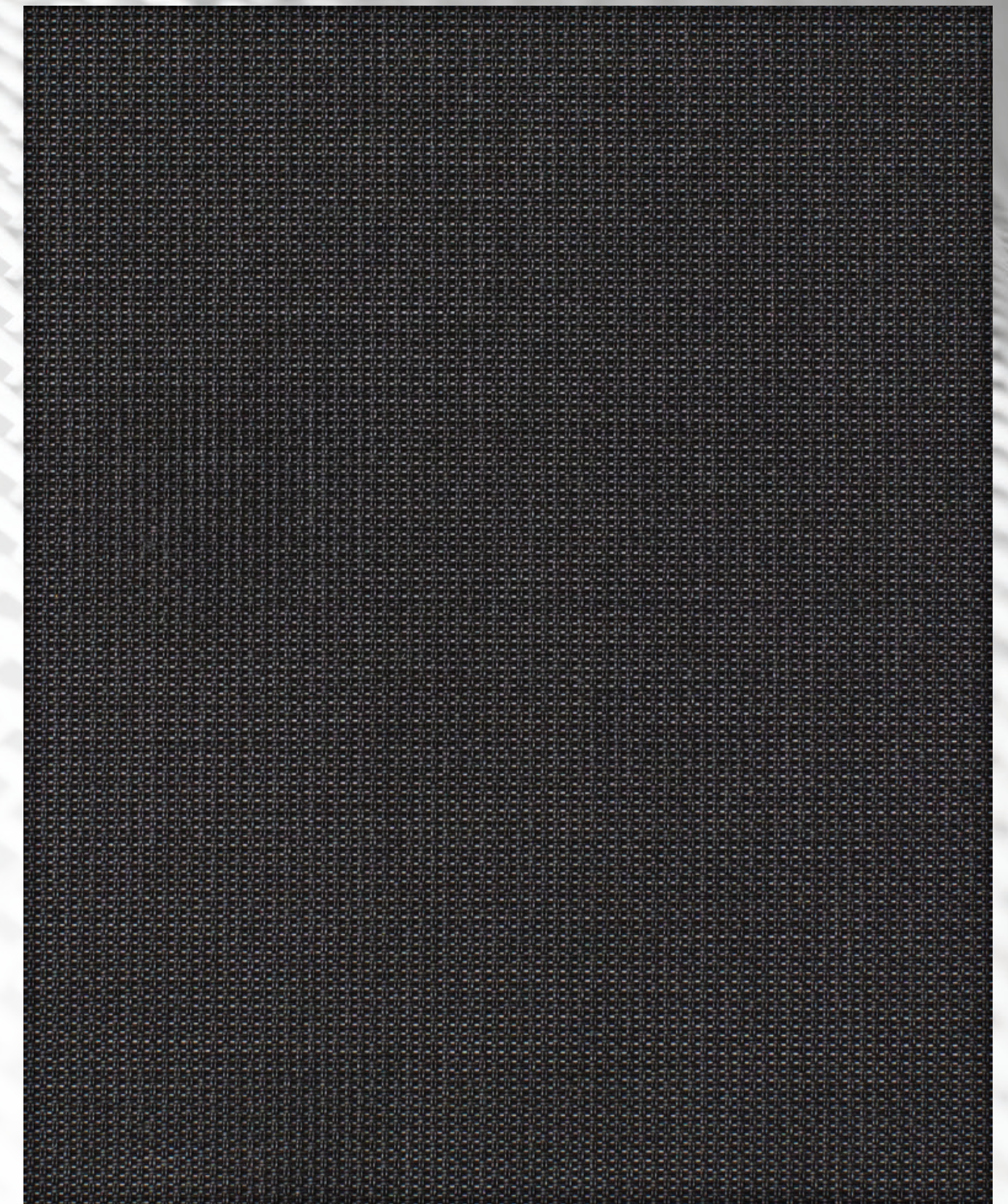
Tumbleweed  
T18A2T023 x 126"

Tobacco Leaf  
T18A2T020 x 126"

Carbon Texture  
T18A2T024 x 126"

Graphite  
T18A2S008 x 126"

Galaxy Black  
T18A2S006 x 126"



T18A2S006  
Galaxy Black

Due to the technical limitations of digital cameras and inconsistencies of display monitors, the characteristics and colors of the fabrics seen on your screen may be slightly different than the actual product.